

Georgia Senate Study Committee on Evaluating E-Scooters and other Innovative Mobility Options

November 4, 2019

 @atlantabeltline

 @atlantabeltline

 @atlantabeltline



Photo credit: angelinasgarden.wordpress.com

22 miles of Transportation Infrastructure



22
MILES
of transit



1,100
ACRES
of environmental
clean-up



46
MILES
of streetscapes and
complete streets



\$10B
in economic
development

30,000 permanent jobs	48,000 construction jobs
---------------------------------	---------------------------------------



33
MILES
of urban trails



28,000
new housing units

5,600
affordable units



1,300
ACRES
of new greenspace



CORRIDOR-WIDE
public art,
historic preservation,
and arboretum

Organizational Structure

*Tax Allocation District
Fundors*



*Public Redevelopment
Authority*



*Single Purpose
Implementation Agent
(Public Funding)*



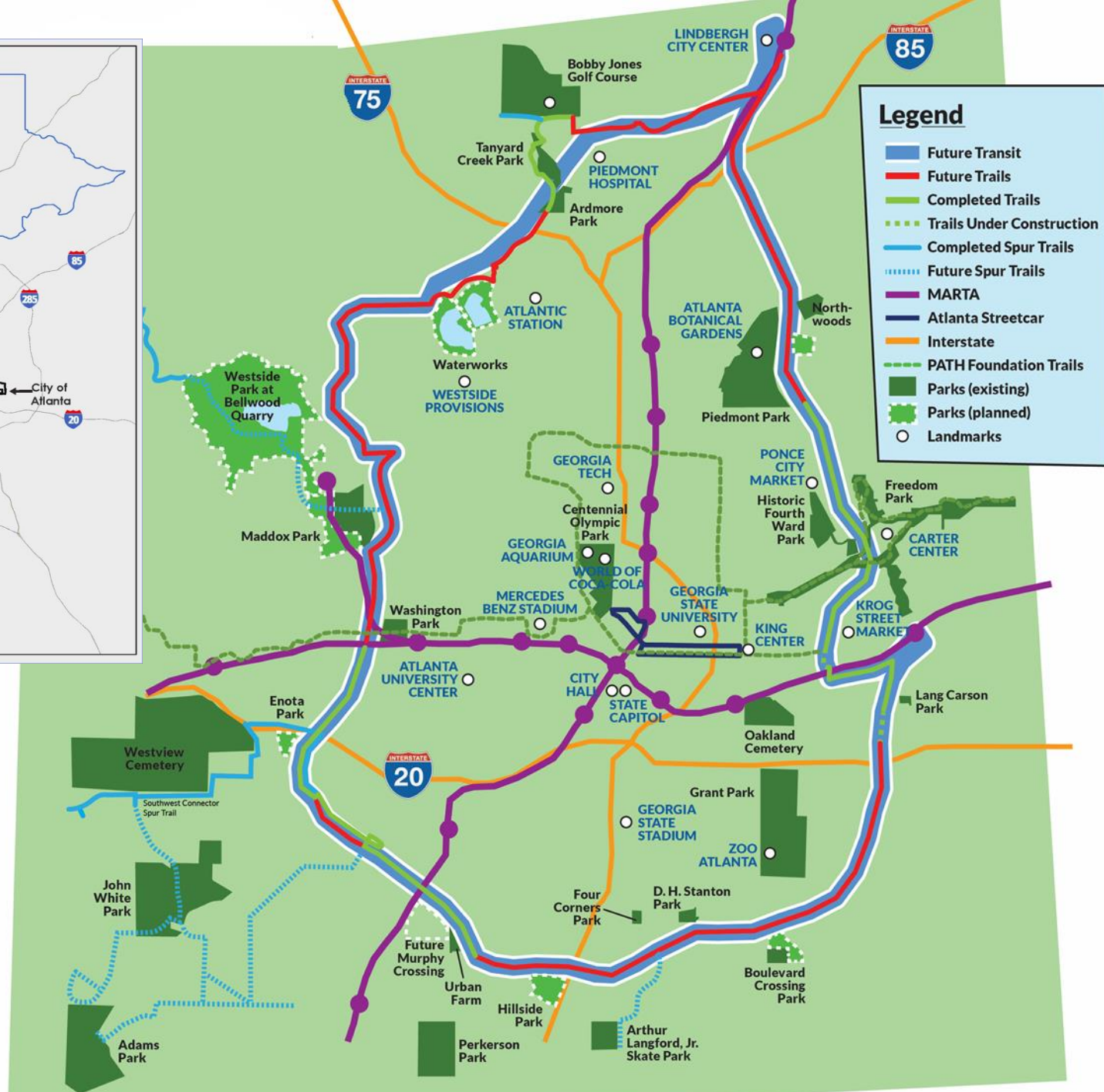
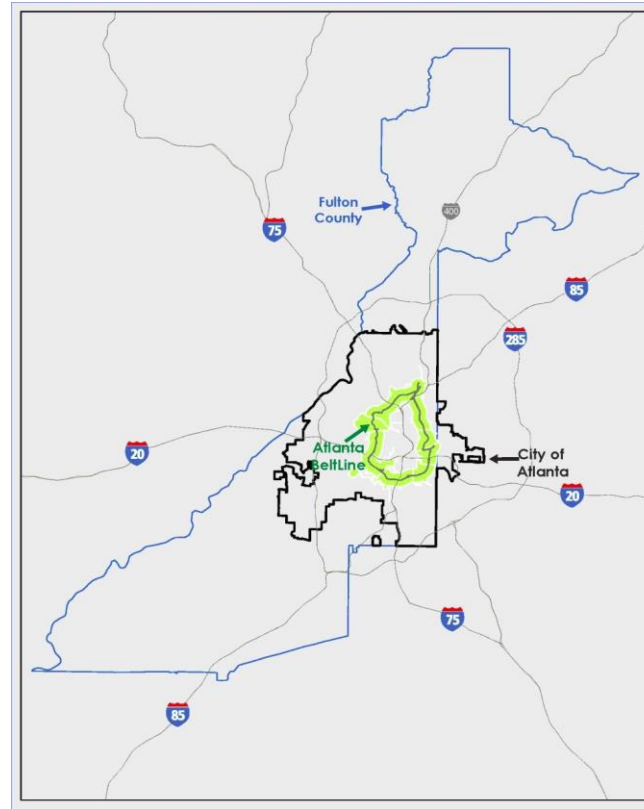
*Community
Programming
(Private Funding)*

Strategic Partnerships



Where is the BeltLine?

- 22% of the City of Atlanta population and 19% of the City's land is within ½ mile of the BeltLine corridor



The Eastside Trail



Before
(Circa 2008)



Current
(July 2019)



Future
(2027 or sooner)

The Westside Trail



Before
(Circa 2012)



Current
(April 2019)



Future
(2033 or sooner)

E-scooter Usage on the BeltLine

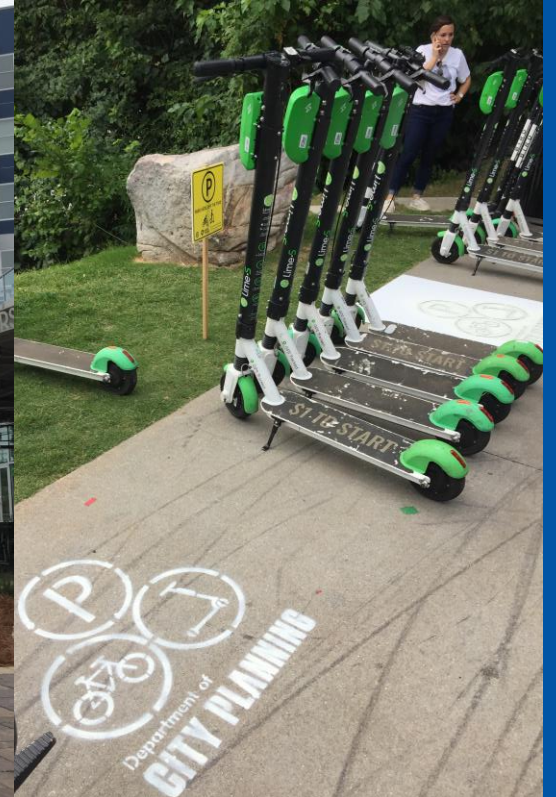
- Eastside Trail
- Westside Trail
- Northside Trail



E-scooter Challenge: Speed



E-scooter Challenge: Parking



Education & Etiquette



Lessons Learned To Date

- Atlanta leading in technology + mobility
- Challenges unique to Atlanta and BeltLine
- Safety first
- Administrative flexibility critical



Challenges Ahead

- Safety requires continuous efforts
- Regulations must be adaptable
- Equity & access fundamental
- Mobility can't change unless infrastructure does



Thank you



Jill Johnson
Government Affairs Director
Jill.Johnson@atlbeltline.org