



An Innovative Approach to Addressing Food Deserts

Presented

By

Menia L. Chester

M. Latrell Enterprises Management Company, Inc.

Desserts by Latrell

August 25, 2021

E: mlatrellandcompany@gmail.com

This presentation is proprietary property of M. Latrell Enterprises Management Company, Inc and cannot be used, copied, distributed (physically or posted online without permission).

Copyright 2021 All Rights Reserved, M. Latrell Enterprises Management Company, Inc.

What is a Food Desert?

According to the United States Department of Agriculture,
food deserts are defined as:

*Low-income census tracts that do not have ready access to
fresh, healthy and affordable food*

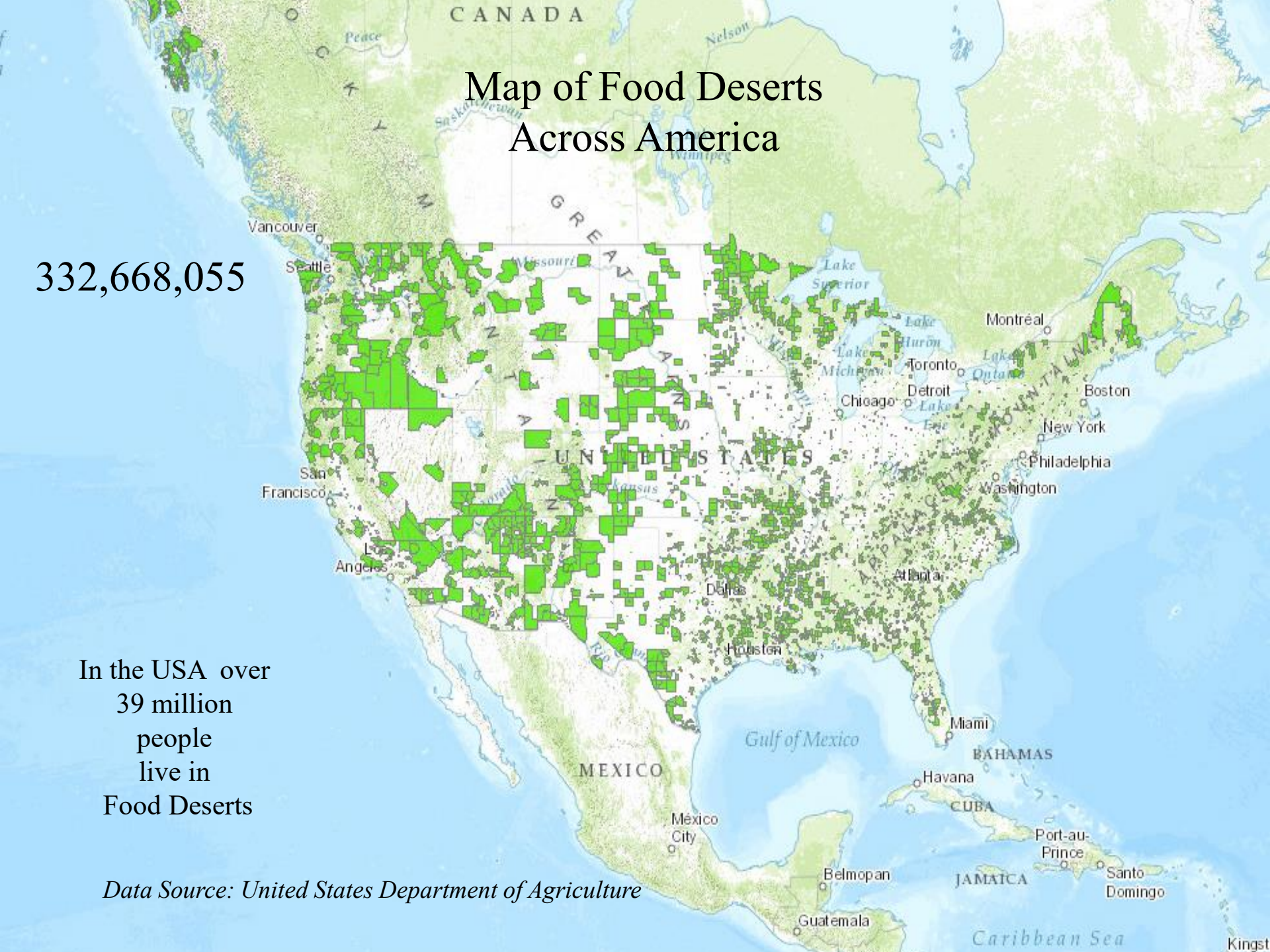
https://www.youtube.com/watch?v=smp0_ylN-Is

Map of Food Deserts Across America

332,668,055

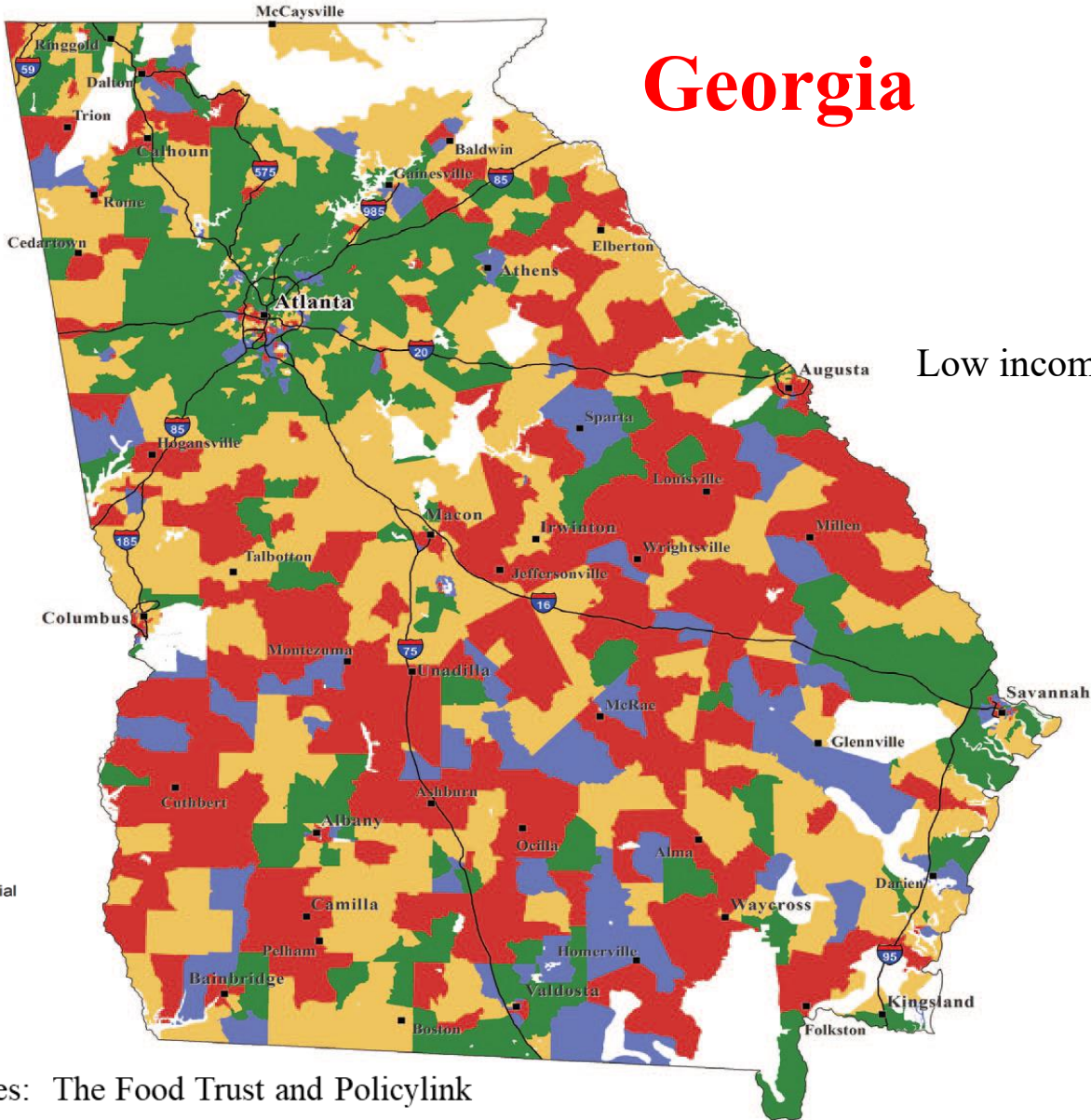
In the USA over
39 million
people
live in
Food Deserts

Data Source: United States Department of Agriculture



Food Deserts in Georgia

Georgia



Low income and diet related deaths

- Income and Deaths**
- Low Income & High Deaths
 - Low Income & Low Deaths
 - High Income & Low Deaths
 - High Income & High Deaths
 - Major Cities
 - Interstate Highways
 - Park, Forest or Non-Residential

Data Sources: The Food Trust and Policylink

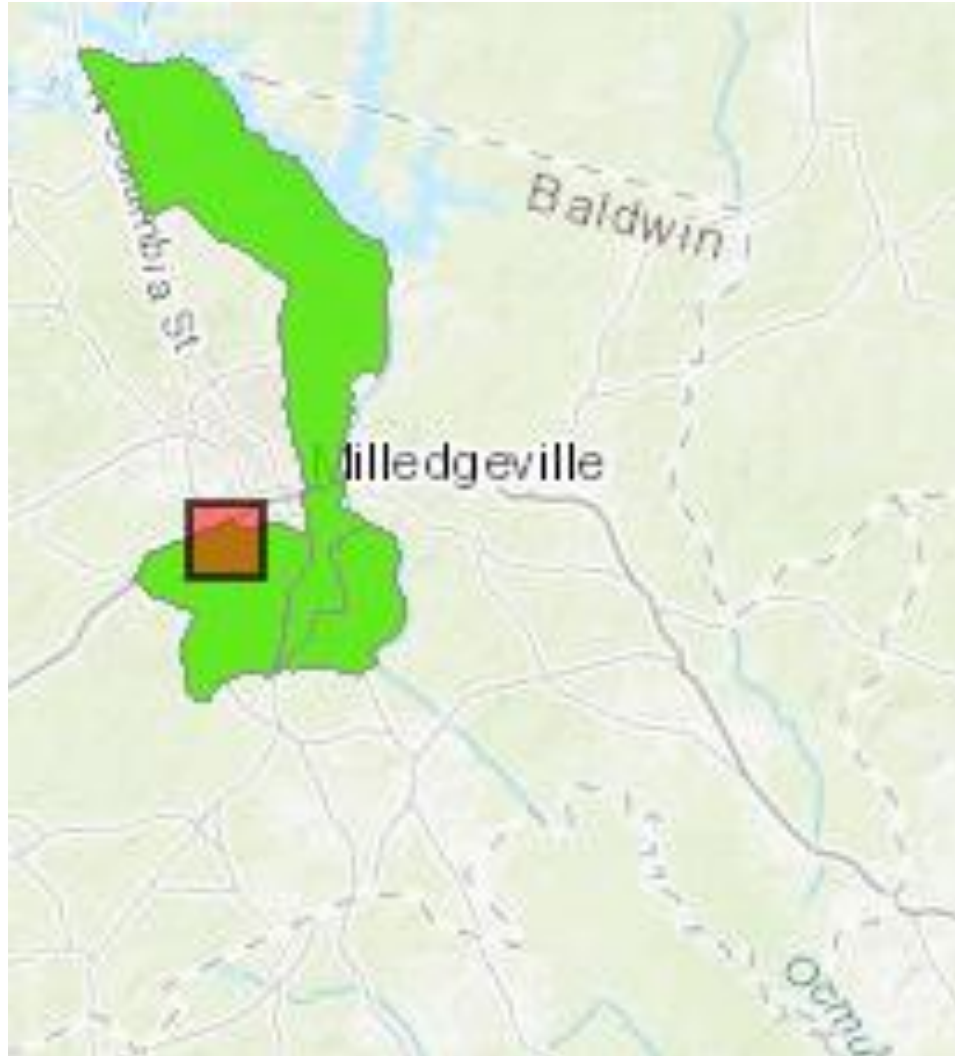
Food Deserts in Baldwin County, GA

Baldwin County Georgia

Harrisburg
Community

West End
Community

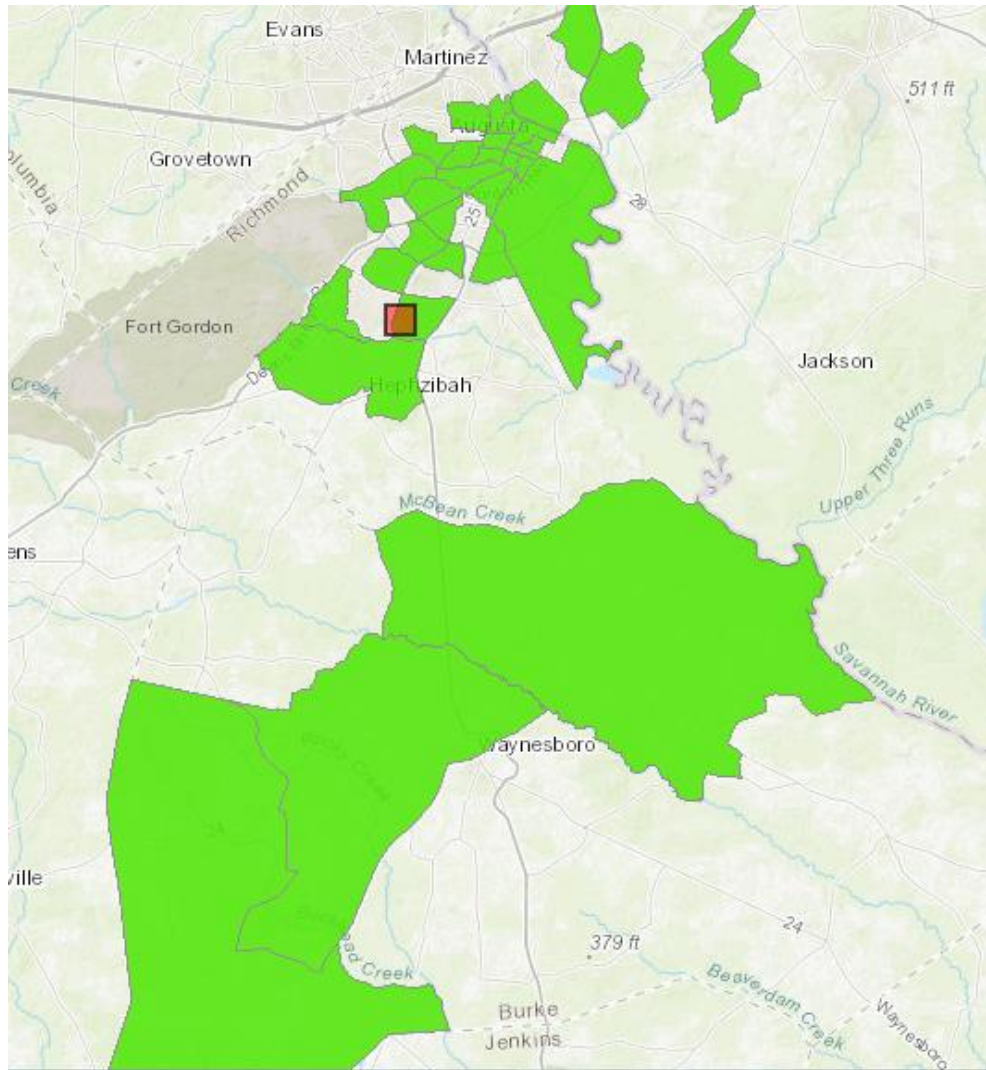
Boddie Community



Data Source: United States Department of Agriculture

Food Deserts in Richmond County

Richmond County Georgia



Data Source: United States Department of Agriculture

Where are Food Deserts Located in Metro Atlanta?

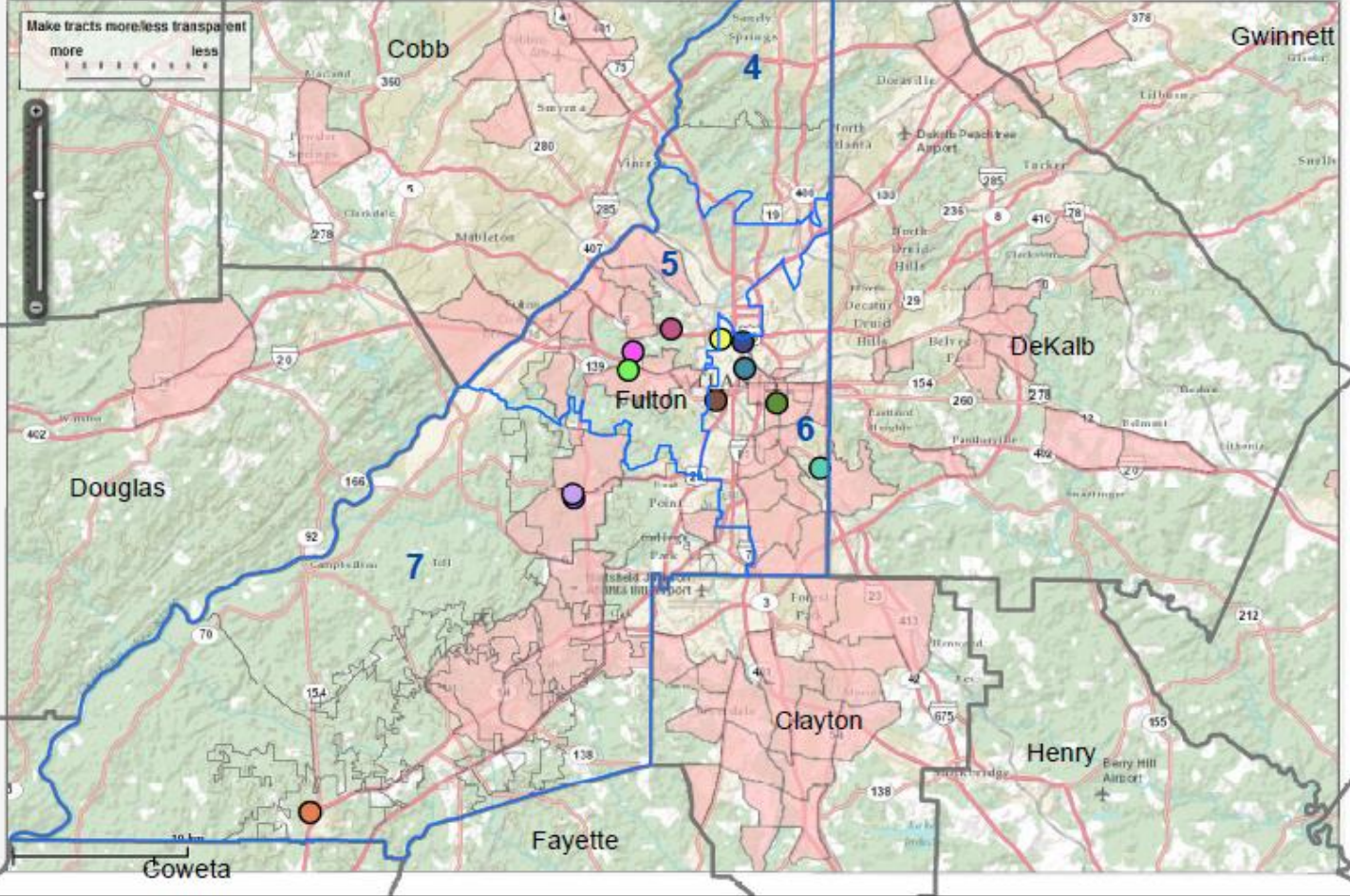


Food Desert Locator

Highlighted census tracts are food deserts. Click on a tract for details.

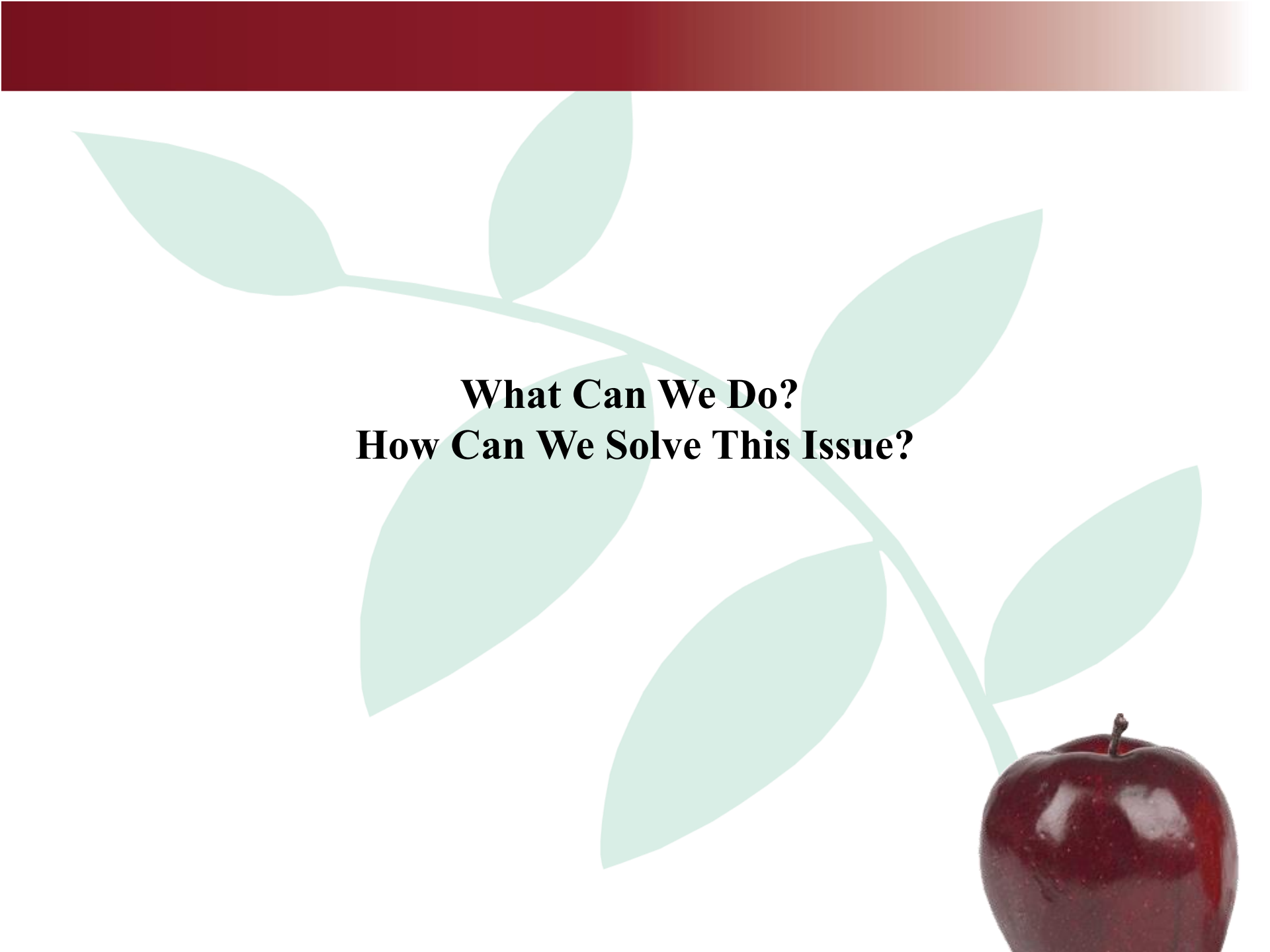
Find address Change Background Print Map Help

Make tracts more/less transparent
more less



Fulton County Food Desert Locations

- Antioch Baptist Church
- Dogwood Library
- Mt. Vernon Church
- The HEALing Community Center
- Barge Road Highrise
- Georgia Avenue Highrise
- Palmetto Senior Center
- The Shrine of the Black Madonna
- Berean Seventh Day Adventist Church
- Lindsay Street Baptist Church
- St. Mark AME Church
- Thomasville Library
- Food Desert Areas
- City Limits
- Counties
- Commission Districts 2002



**What Can We Do?
How Can We Solve This Issue?**

Questions? Contact Information

Menia L. Chester

M. Latrell Enterprises Management Company, Inc

Desserts by Latrell

E: mlatrellandcompany@gmail.com

<https://www.instagram.com/dessertsbylatrell/>

This presentation is proprietary property of M. Latrell Enterprises Management Company, Inc and cannot be used, copied, distributed (physically or posted online without permission).

Copyright 2021 All Rights Reserved, M. Latrell Enterprises Management Company, Inc.