

Georgia Comprehensive Sickle Cell Center at Grady

November 1, 2021

Morgan L. McLemore, M.D.

Medical Director Georgia Comprehensive Sickle Cell Center at Grady

Pooja Mishra, FACHE

Vice President, Oncology and Sickle Cell Center at Grady

Nikita Barrett

Clinical Staff Manager, Georgia Comprehensive Sickle Cell Center at Grady

Grady: An Invaluable Asset



**Industry-leading
Marcus Stroke and
Neuroscience Center**



**Georgia Cancer
Center for
Excellence and
Avon Breast Center**



**911 ambulance service for
Atlanta and South Fulton;
service provider for 16 rural
GA counties**



**State-of-the-art
Correll Cardiac
Center**



**Busiest Level 1
Trauma Center in
Georgia – ACS
Nationally Certified**



**One of the country's
largest infectious
disease programs**



**Nationally
accredited
burn center –
1 of only 2 in
GA**



**World's first 24-hr
comprehensive
sickle-cell center**



**Georgia's only
poison control
center**

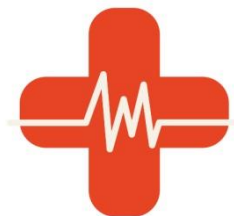
High Quality Care for All



MORE THAN

715,000

PATIENT VISITS PER YEAR



153,000+

PATIENTS TREATED IN THE
EMERGENCY DEPARTMENT



GRADY EMS RESPONDED TO
MORE THAN

141,000

911 CALLS



6

GRADY NEIGHBORHOOD
HEALTH CENTERS



25%

OF ALL GEORGIA PHYSICIANS
RECEIVED SOME OF THEIR
TRAINING FROM GRADY



MORE THAN

7,200

EMPLOYEES

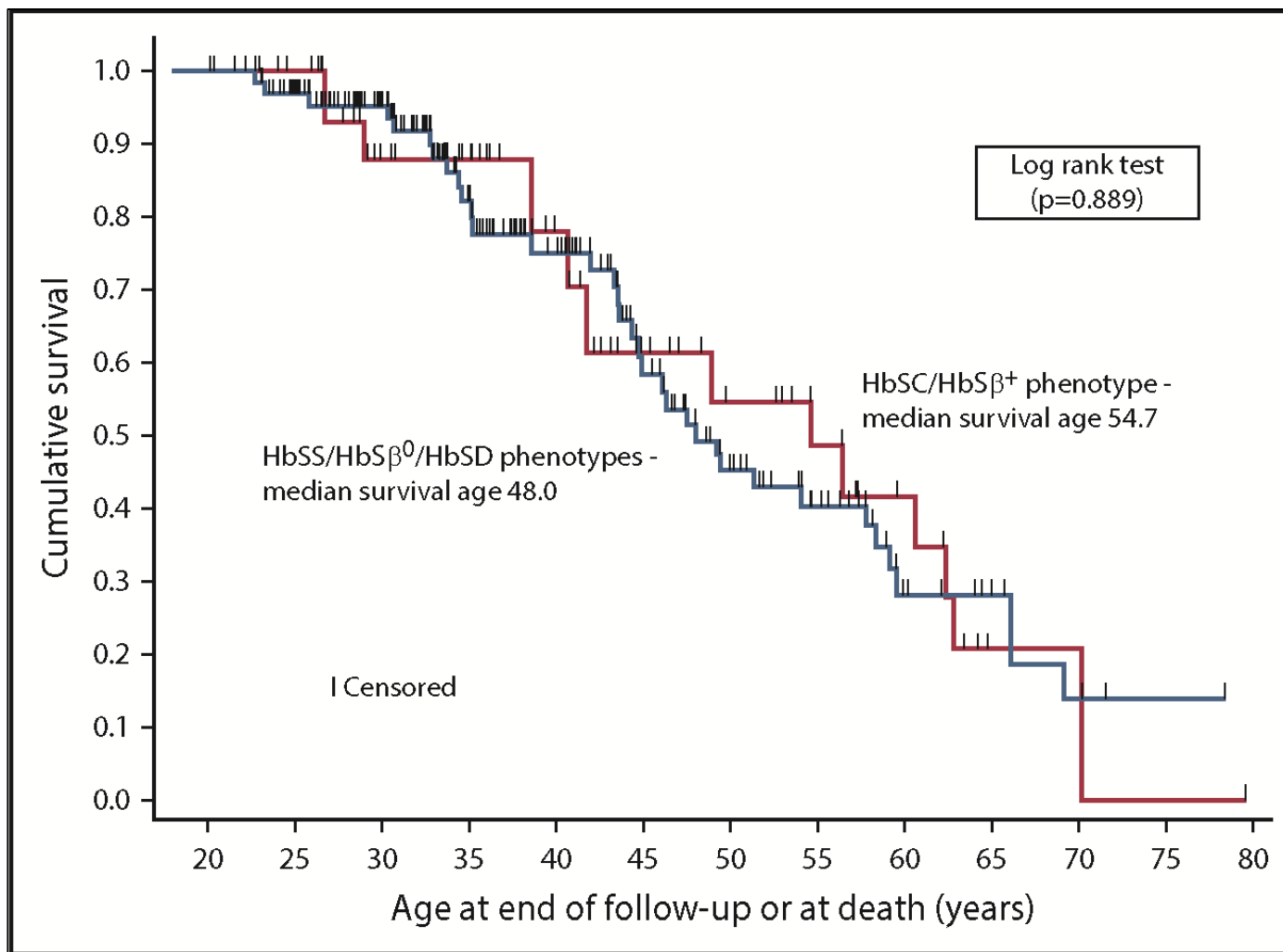


GRADY IS THE LARGEST HOSPITAL
IN GEORGIA WITH

953

LICENSED BEDS

Decreased Median Survival of Adults with Sickle Cell Disease After Adjusting for Left Truncation Bias: A Pooled Analysis

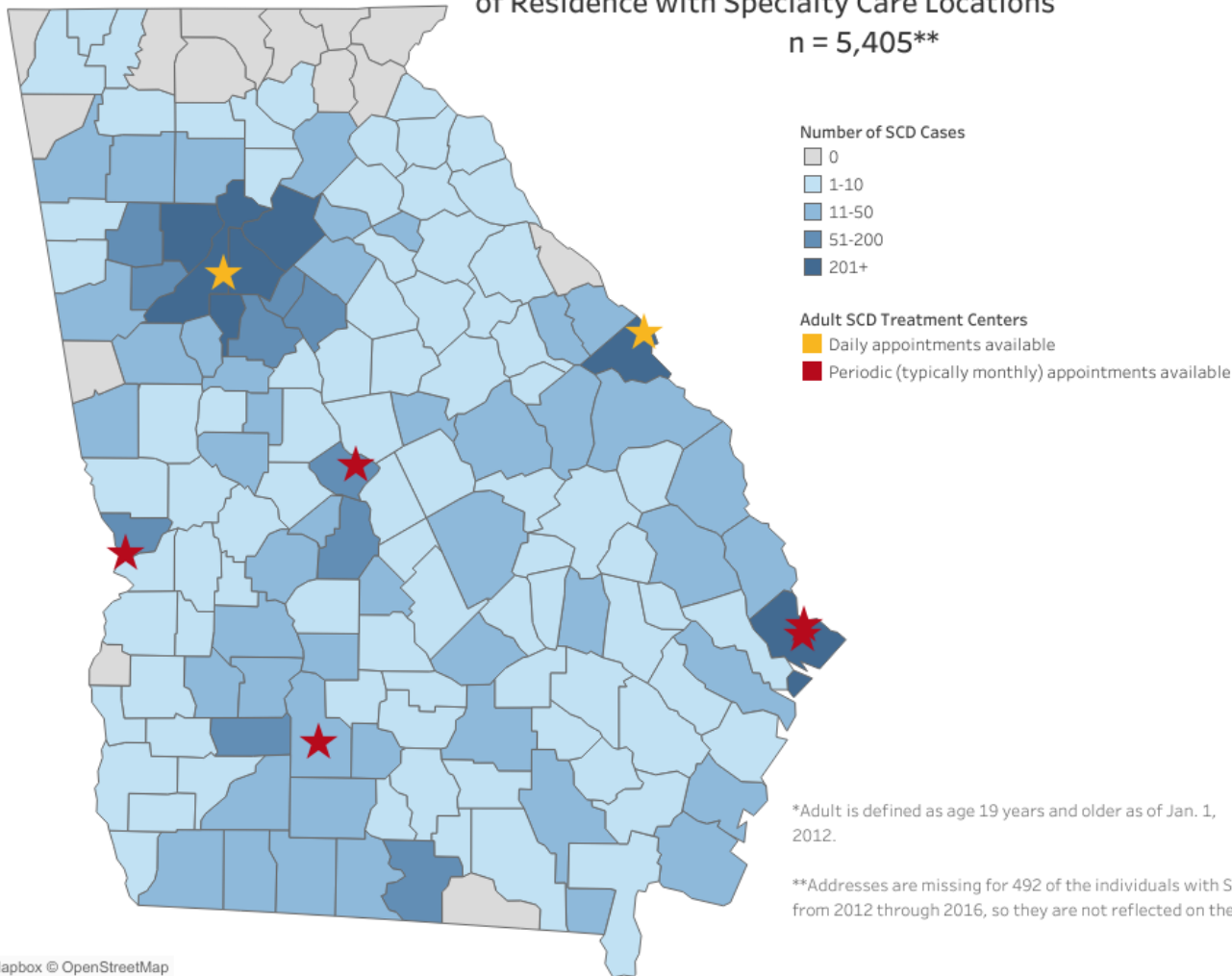


Michael R. DeBaun, Djamila L. Ghafari, Mark Rodeghier, Poulami Maitra, Shruti Chaturvedi, Adetola Kassim, Kenneth I. Ataga, Decreased median survival of adults with sickle cell disease after adjusting for left truncation bias: a pooled analysis, *Blood*, 2019, Figure 1.



Sickle Cell Disease – Georgia Landscape

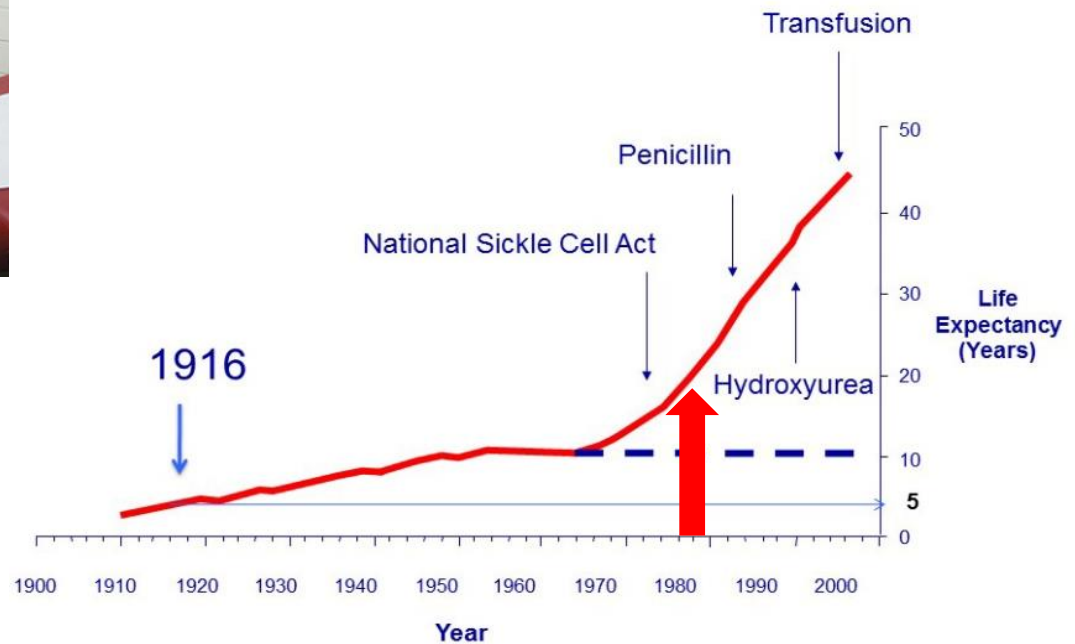
Adult SCD Prevalence* in Georgia 2012-2016 by County
of Residence with Specialty Care Locations
n = 5,405**



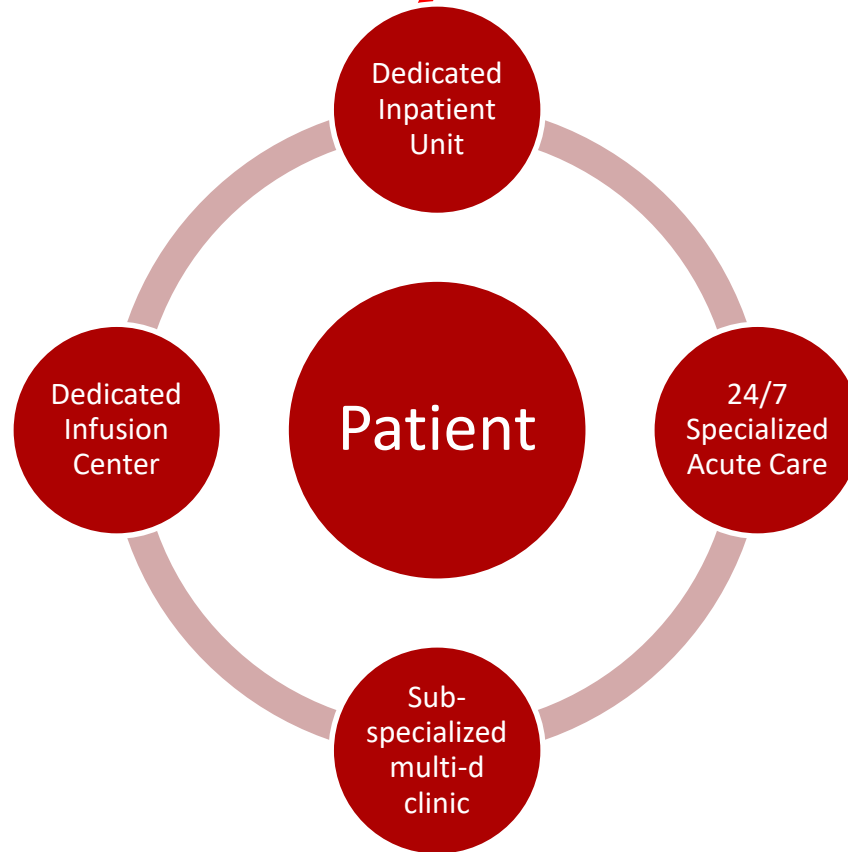
Sickle Cell at Grady



37 Years



Georgia Comprehensive Sickle Cell Center at Grady Health System



Supported by wrap-around services, clinical trial access and outreach and support
Partnership with Sickle Cell Foundation of Georgia

Our Team



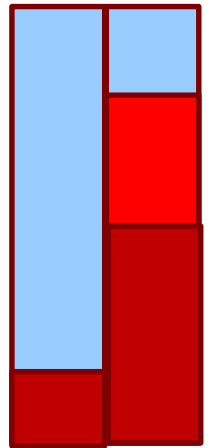
Clinic and Infusion Center

~1,400 Patients

- Largest Adult Clinic in the United States
 - 3,300 outpatient Visits
- Transition program from pediatric care
- Dedicated Social Worker, Psychiatry Liaison, Clinical Pharmacist
- Dietitian and Exercise Coach
- Nephrology, Neurology Clinics
- Dedicated Infusion center
 - Transfusion, Red Cell Exchange, Intravenous treatments

Dedicated 24/7 Acute Care

- Acute Care
- First and possibly only 24 hour dedicated Sickle Cell Emergency Room.
- **~3,500 visits per year.**
- Prompt evaluation and treatment
- Decreases hospitalization and complications



GMH Published Admission Rate

Specialized Inpatient Care

- Designated inpatient unit for sickle cell patients
- Nurse driven interventions to enhance patient experience
- Frequent collaboration and communication with hematology team
- Engaged in weekly interdisciplinary meetings to support patient transitions
- Dedicated mid-level provider for admitted patients for continuity

Access to Clinical Trials/Research

- SCD-CARRE NIH/NHLBI
 - Red Cell exchange for high morbidity conditions
- Stride II NIH/NHLBI (Closed to enrollment)
 - Hematopoietic stem cell transplant in Adults
- EMBRACE HRSA
 - Outreach and quality control
- ST3P-UP PCORI
 - Enhancing transition

- Riociquat Bexar/UP
- FT-4202 Forma
- FTX-6058 Fulcrum therapeutics
- Crizanlizumab Novartis
- RedeS Cerus

- Internal
 - Vaccine response
 - Long term outcomes following transition
 - Care coordination across metro area

How Can You Help?

Increasing awareness of available resources

Supporting framework to help patients access quality care

Policy support to address barriers to care
social determinants of health

GEORGIA COMPREHENSIVE SICKLE CELL CENTER



Nation's Best Sickle Cell Care

The Georgia Comprehensive Sickle Cell Center at Grady is the world's first 24-hour acute care center for adult patients with sickle cell disease and the only comprehensive sickle cell center in Georgia. We provide comprehensive primary care by appointment and 24/7 acute care services for pain crisis management.

Our hematologists are specialists in the sickle cell disease. We will be a steady companion and partner, providing the care you need.

Why Choose Us

No one in Atlanta has the sickle cell expertise you find at Grady.

Our sickle cell team understands the symptoms that sickle cell patients face, including joint and bone pain, fatigue, infections, and leg ulcers.

And, because Grady has one of the region's most active research programs, we provide access to some of medicine's most promising emerging therapies.

What We Treat

- Fatigue and Anemia
- Infections
- Kidney Disease
- Leg Ulcers
- Stroke and Acute Chest Syndrome

Treatments We Offer

- Erythrocytapheresis and Transfusion Therapy
- Hydroxyurea
- Pain Management
- New Therapies: L-glutamine, Crizanlizumab, and Voxelotor
- Wound Care

Other Services Include:

- Outpatient services with specialists in kidney disease, stroke, obstetrics and gynecology, and transfusion therapy.
- Transition clinic for young adults transitioning from pediatric to adult care.



Directions:

80 Jesse Hill Jr. Drive, SE
Atlanta, Georgia 30303

Hours:

Monday – Friday, 8AM - 4:30PM
Acute Care 24 hours a day,
seven days a week.

Appointments:

(404) 616-3388

gradyhealth.org

Thank You!

