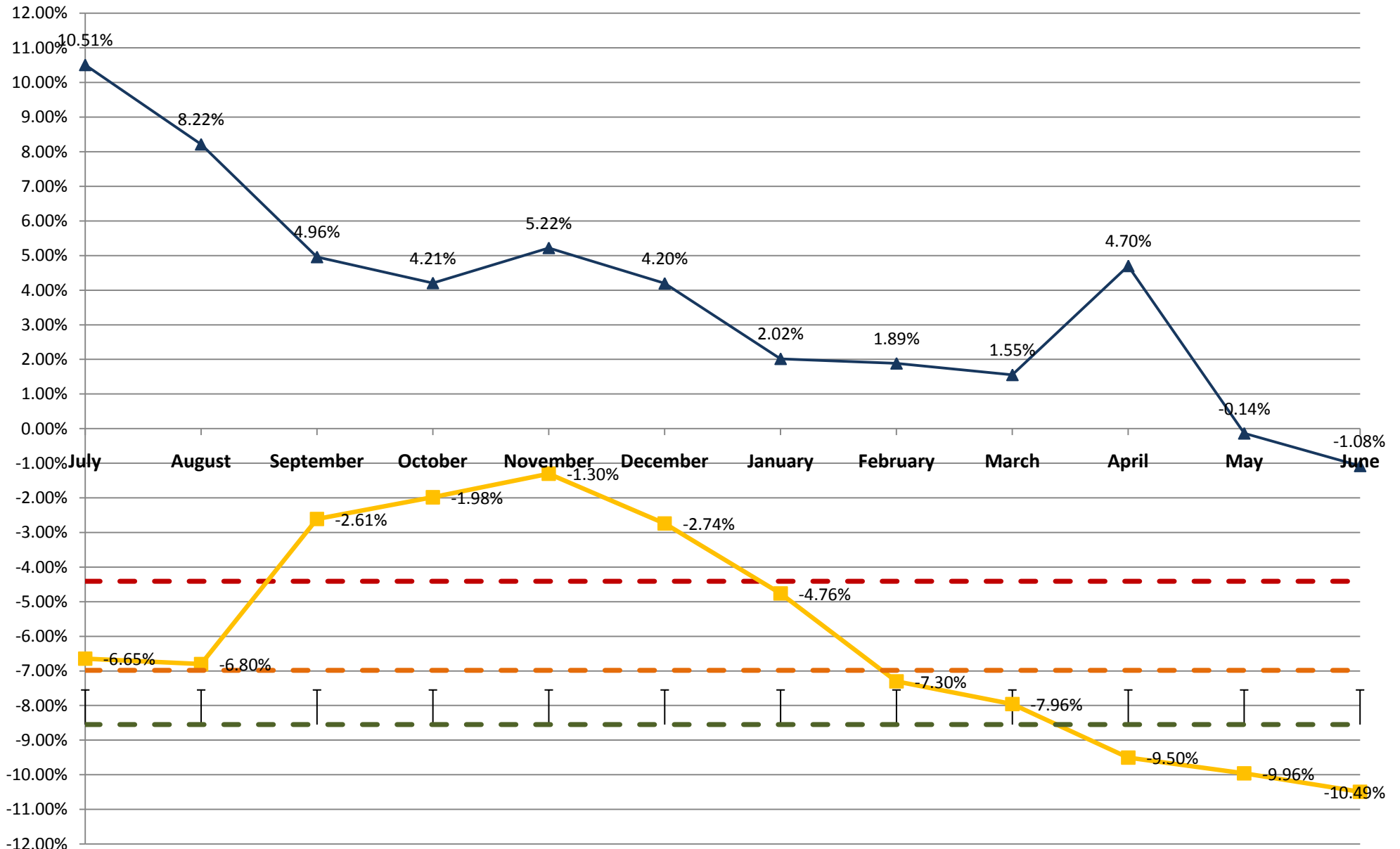


Dept of Revenue Collections (Year To Date) vs. Revenue Estimate*

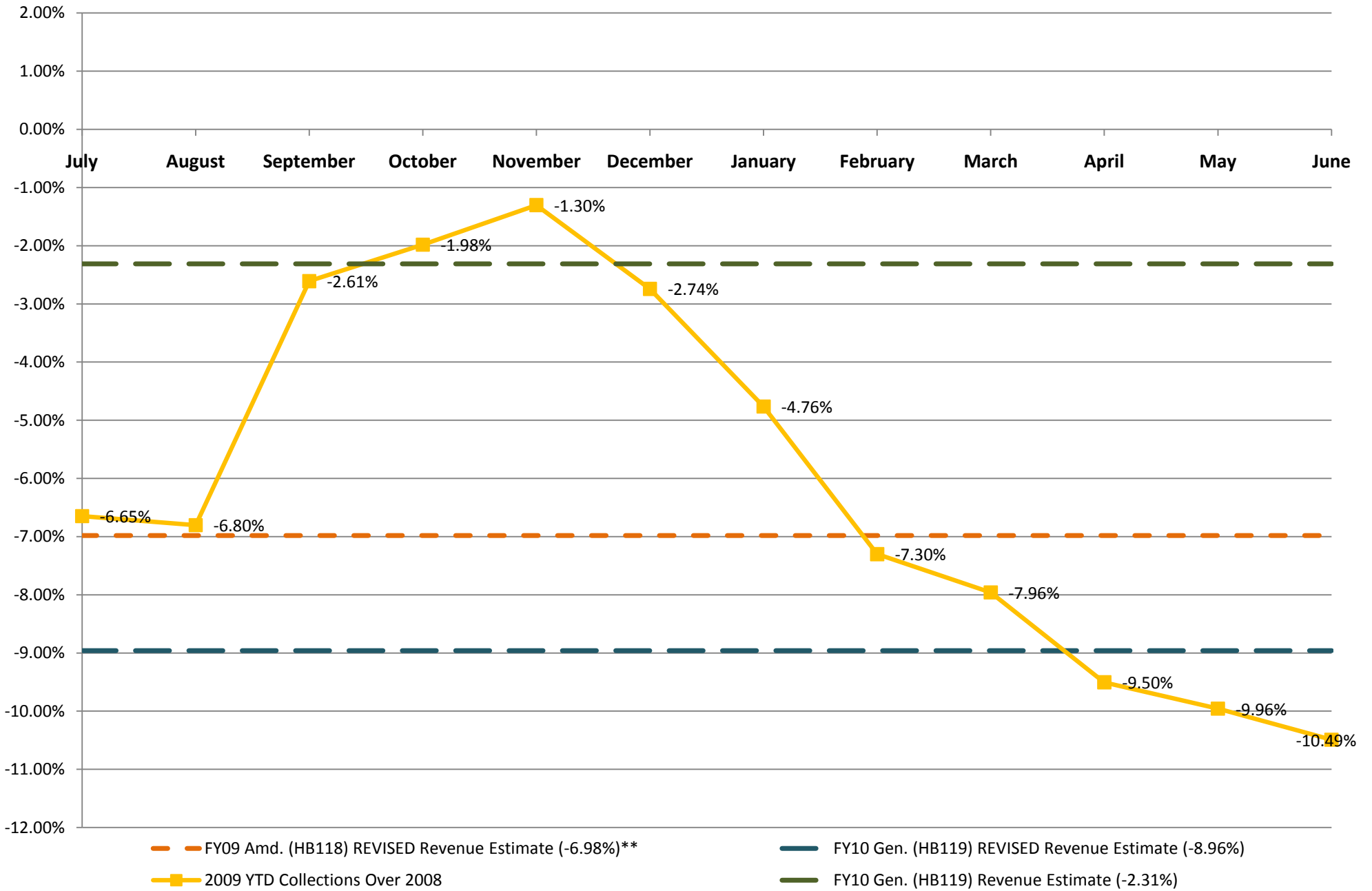


- - - FY09 Amd. (HB118) Revenue Estimate (-4.41%)
- - - FY09 Amd. (HB118) REVISED Revenue Estimate (-6.98%)**
- - - FY09 Amd. MAY 28th Revised Est (-8.55%)
- 2009 YTD Collections Over 2008
- ▲— 2008 YTD Collections Over 2007

*Compares revenues collected only by the Department of Revenue. Other agency collections, such as insurance premium taxes are not included.

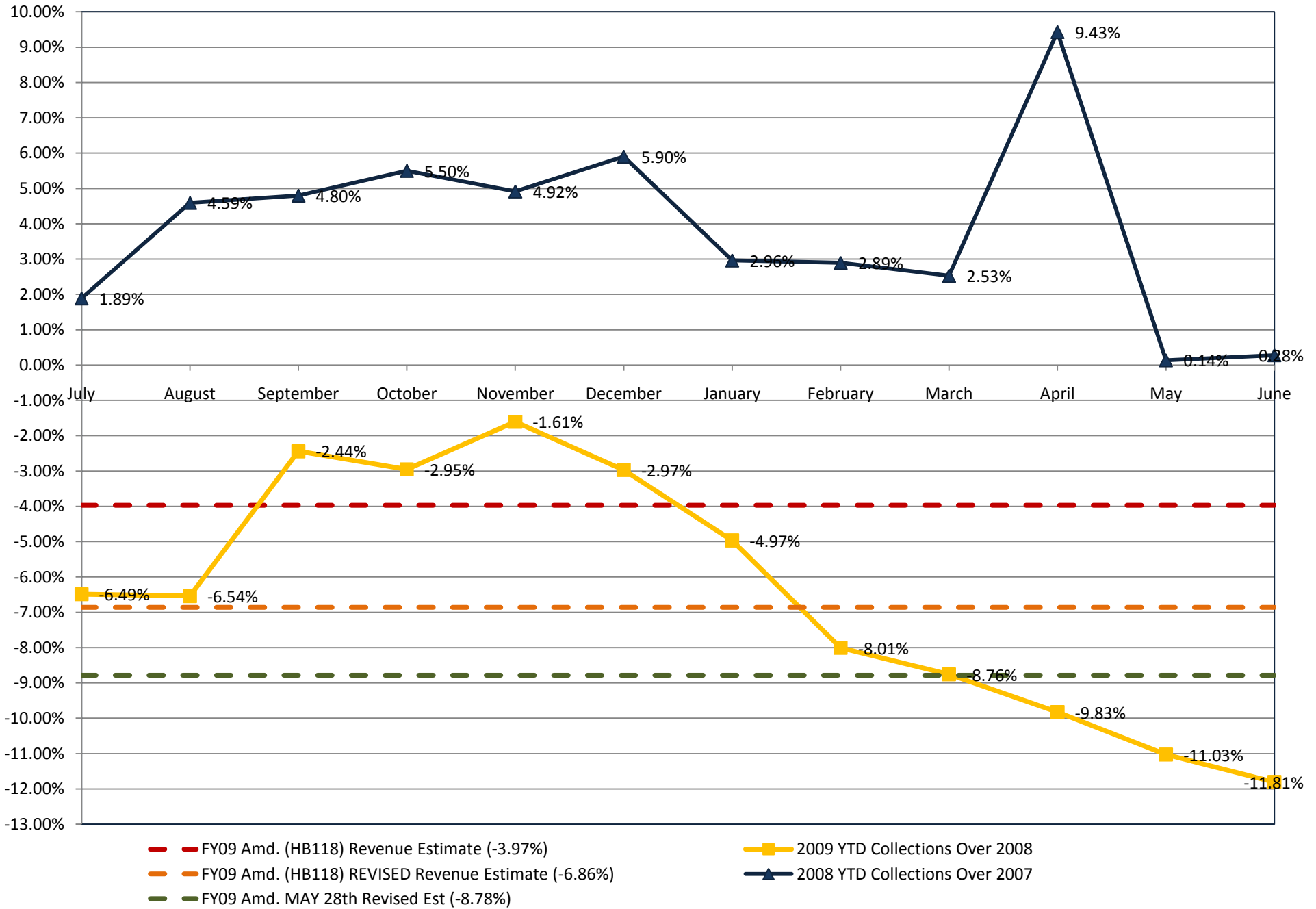
**Black bars above the FY09 Amd. Rev. Estimate indicates 1% additional growth needed to fund the FY10 Amd. mid-year adjustment for K-12 enrollment .

Dept of Revenue FY09 Collections (Year To Date) vs. FY10 Revenue Estimate*

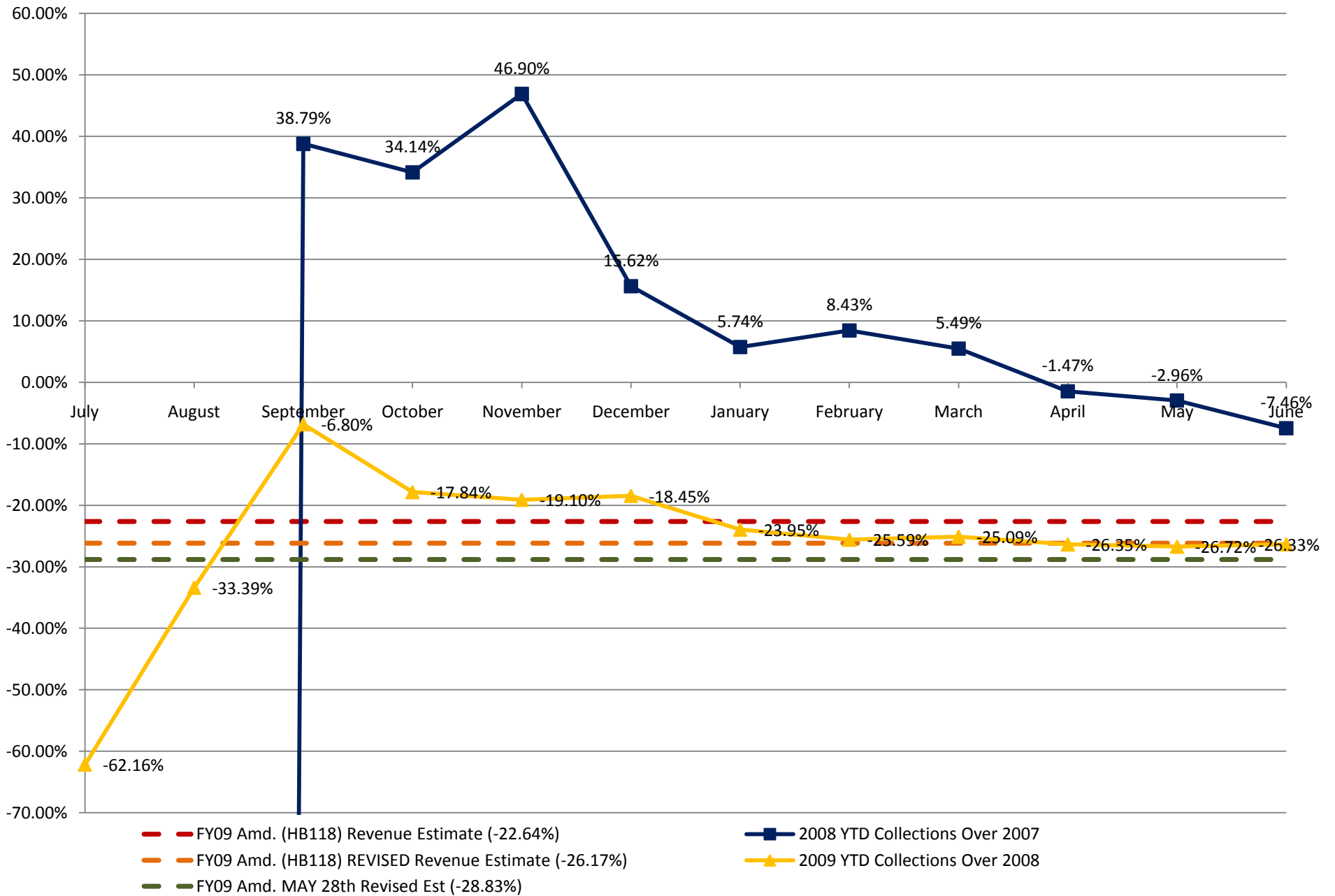


*Compares revenues collected only by the Department of Revenue. Other agency collections, such as insurance premium taxes are not included.

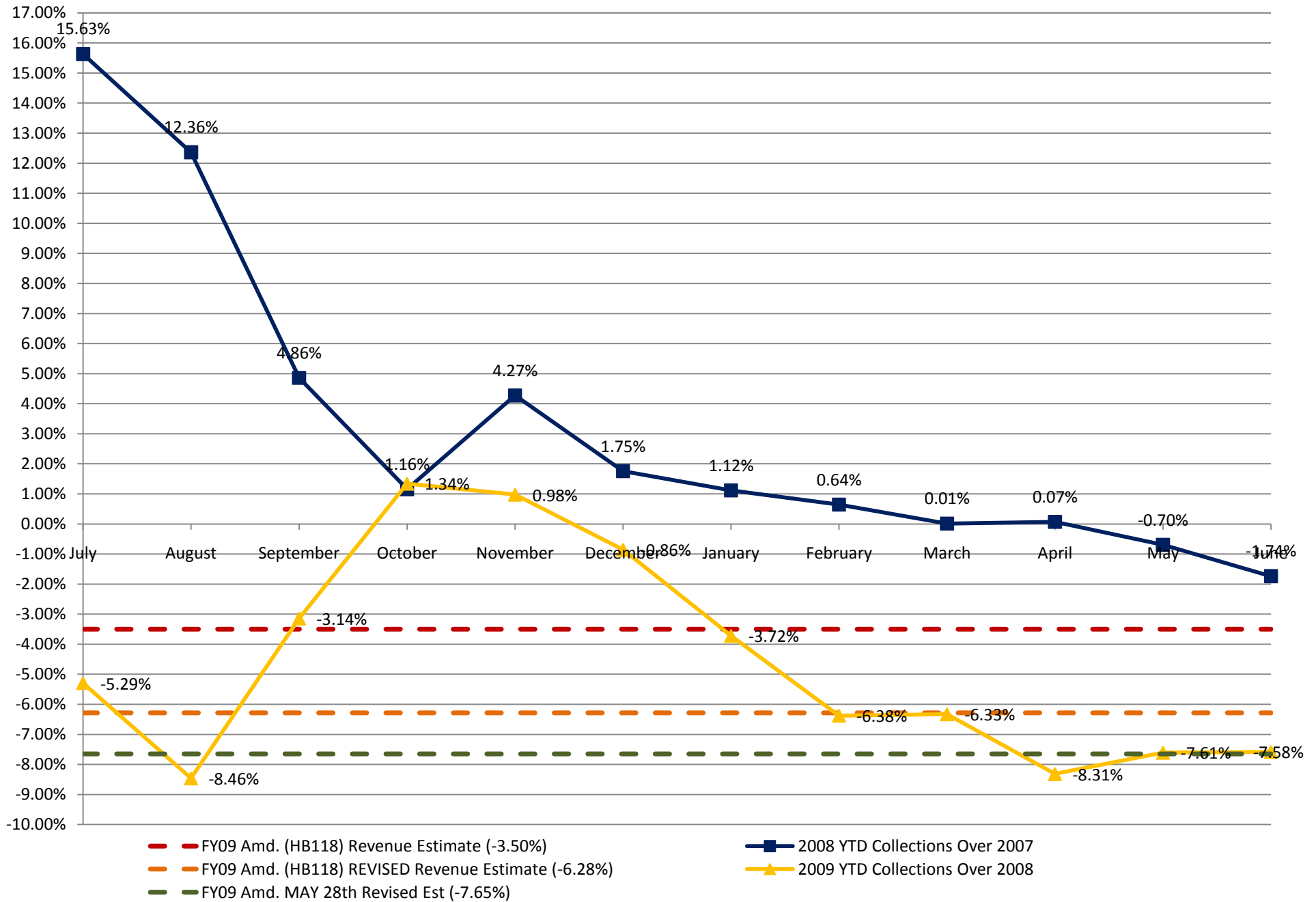
Income Tax Growth (YTD) vs. Revenue Estimate



Corporate Income Tax Growth (YTD) vs. Revenue Estimate



Sales and Use Tax Growth (YTD) vs. Revenue Estimate



Motor Fuel Tax Growth (YTD) vs. Revenue Estimate

